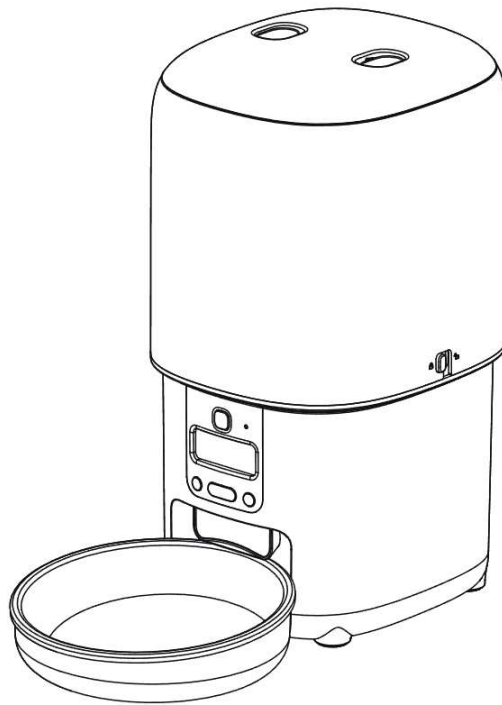


Smart Pet Feeder PFD-A2 Automatic 4L White
SKU: 6924

User Manual



*Myers*TM

Table of Contents:

1. PRODUCT OVERVIEW.....	3
2. IN THE BOX:	4
3. DISPLAY.....	4
4. BUTTONS AND INDICATOR	5
5. GETTING STARTED	6
6. POWER ON	6
7. SETTING THE CURRENT TIME	7
8. SETTING THE FEEDING PLAN	7
9. CLEAN AND CARE.....	8
10. TROUBLESHOOTING.....	9
11. SAFETY INSTRUCTIONS.....	10

Cautions:

1. Please install and use this device strictly according to the instructions.
2. Once installed and used, it means that you have carefully read and accepted the following safety instructions.
3. Please use it in an indoor environment, do not place it in direct sunlight, and keep it away from fire sources.
4. Please place the device on a flat and hard ground, and do not place articles on the top of the device.
5. Do not drag or place vigorously during placement to avoid device damage.
6. Please unplug the power cord when moving, cleaning the device or not using it for a long time.
7. Please use the original power adapter to avoid damage to the device or potential safety hazards.
8. If children use this device, please make sure to use it under the guidance of an adult.
9. Please perform maintenance under the guidance of professionals to avoid all kinds of damages.
10. If the product does not work properly due to other unknown conditions, and you do not have time to refer to the instructions, please restart the power.
11. If you encounter product use problems, please contact customer service.

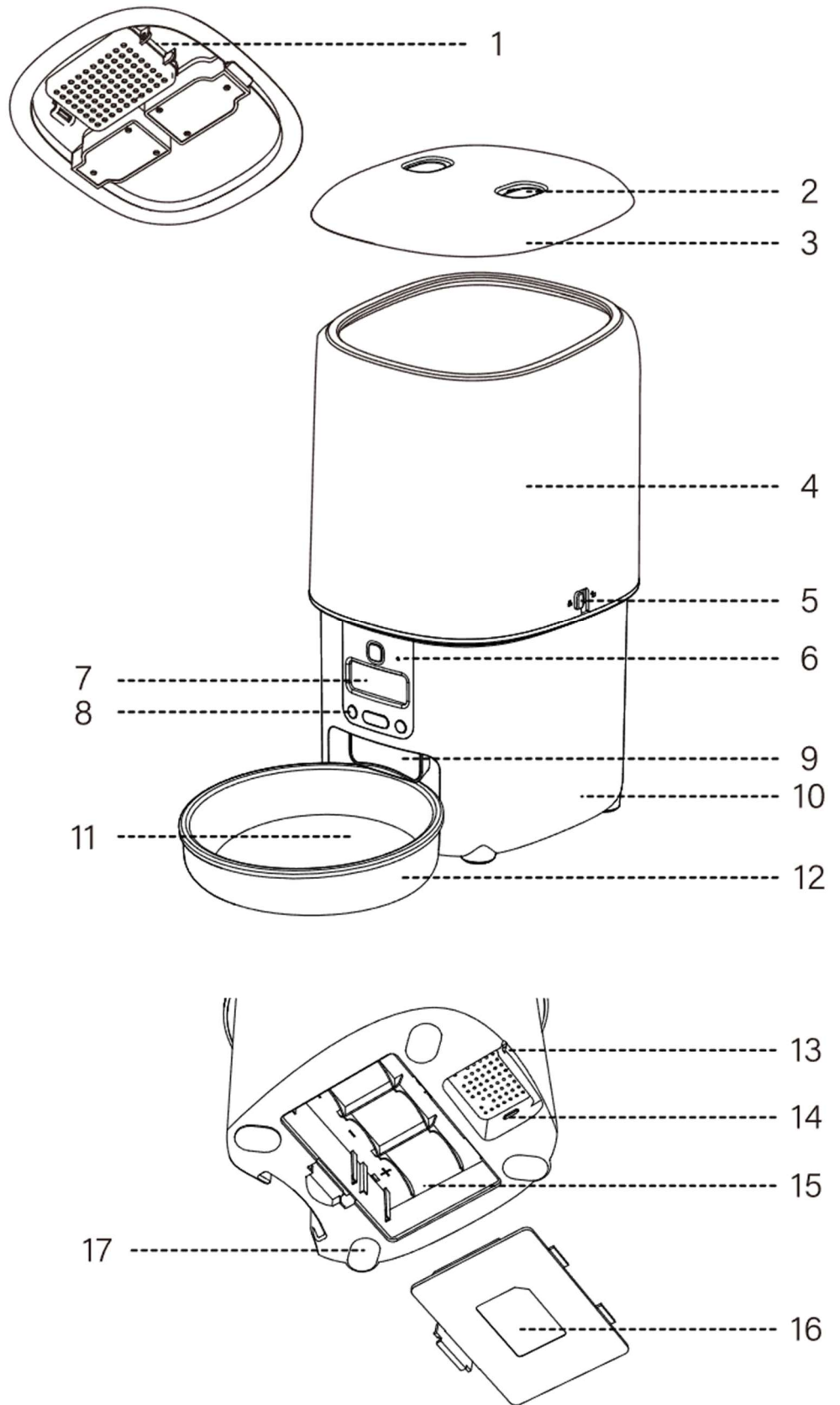
Documentation



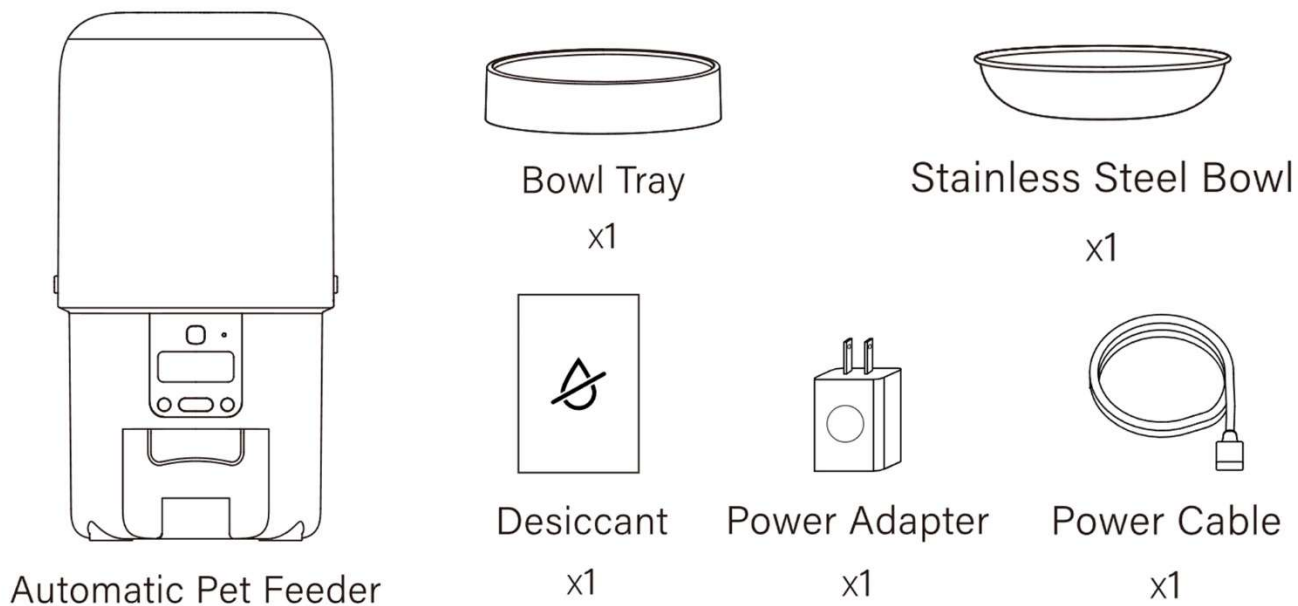
<https://doc.partizan.global/sku/6924>

1. Product overview

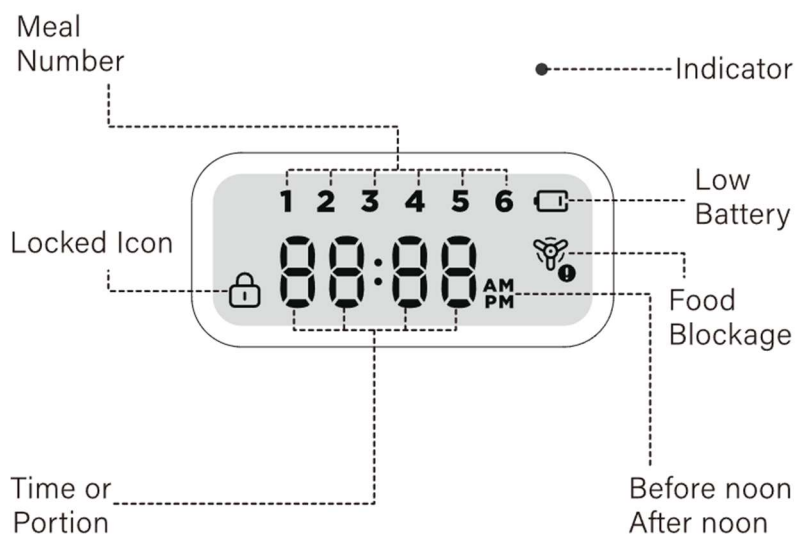
- 1. Desiccant Holder
- 2. Lid Release Button
- 3. Lid
- 4. Food Tank
- 5. Tank Release Button
- 6. Indicator
- 7. LCD Display
- 8. Operation Panel
- 9. Food Outlet
- 10. Base
- 11. Stainless Steel Bowl
- 12. Bowl Tray
- 13. Cable Slot
- 14. Power Port
- 15. Battery Compartment
- 16. Battery Cover
- 17. Anti-skid Pad





2. In the box:

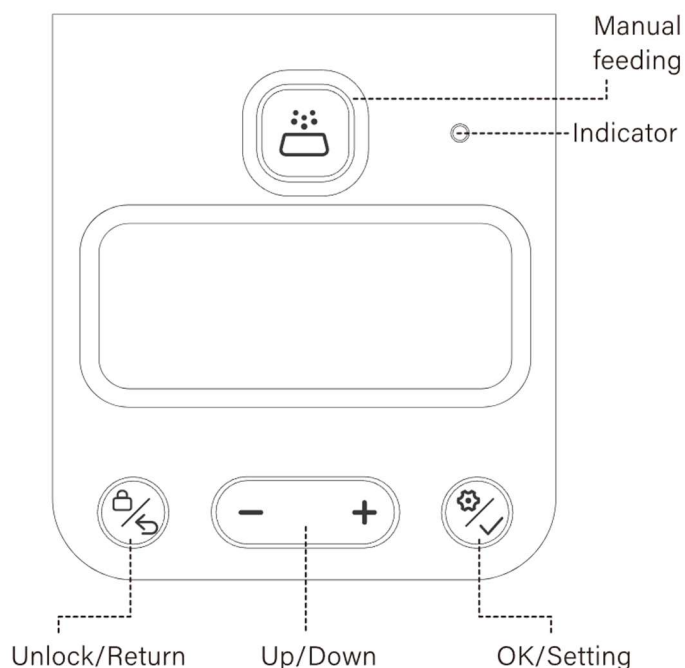


3. Display



Indicator Status	Solutions
The red light flashes and the screen  shows	Low battery, please change the battery
The red light flashes and the screen  shows	Food gets stuck, please remove the food tank and unclog the food outlet
White light stays on	Working well

4. Buttons and indicator



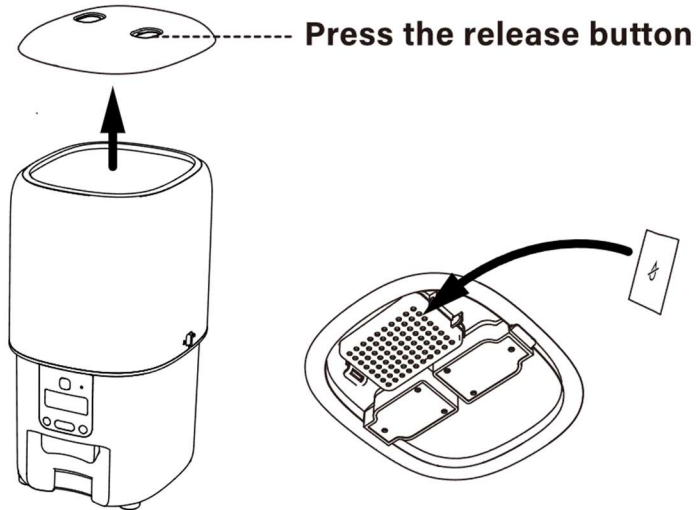
Buttons	Function
Unlock / Return Button	<ul style="list-style-type: none"> • In the locked state, press and hold for 3 seconds to unlock. • In the unlocked state, press and hold for 3 seconds to lock. • In the unlocked state, press once to return to the last step.
UP / Down Button	<ul style="list-style-type: none"> • In the unlocked state, press Up/Down to choose time, portion, AM or PM. • In the locked state, press Up/Down to check the meal settings.
OK / Setting Button	<ul style="list-style-type: none"> • In the unlocked state, press and hold for 3 seconds to start setting the current time and feeding plan. After the plan is set up, press and hold for 3 seconds again to end the setting. • In the unlocked state, press once to confirm the setting and enter the next step.
Manual Feeding	Press once to dispense one portion, press several times to dispense more.

Note:
To reset the feeder, in the unlocked state, press the Unlock/Return button and the OK/Setting button simultaneously for 3 seconds until all icons on the screen light up, the resetting is complete.

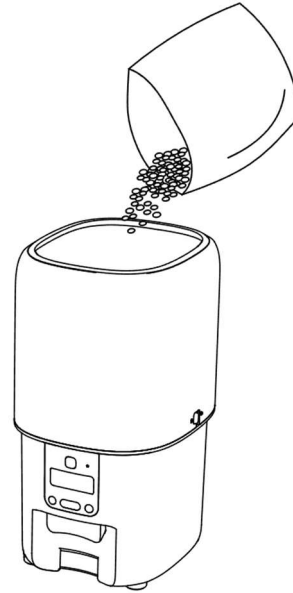
5. Getting started

Installation:

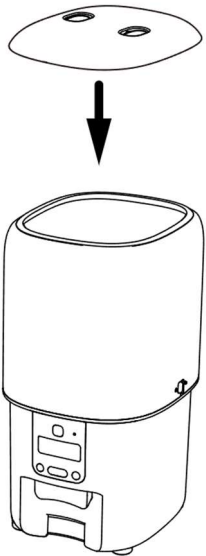
1. Press the release button to open the lid, put in the desiccant bag:



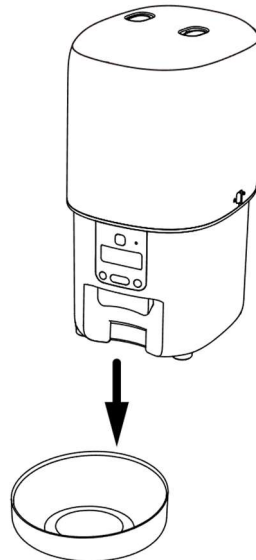
2. Add food to the tank:



3. Lock the lid securely:



4. Install the stainless-steel bowl and bowl tray:



6. Power on

Dual power Modes

1. Connect the power cable and install the batteries as a backup in case of power cuts.
2. The feeder can run on batteries alone.




Power off

Unplug the power cable and remove the batteries.

7. Setting the current Time

Note:

The feeder can work well only when the time of the feeder is consistent with the current time.

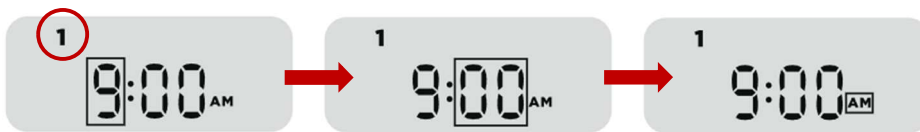
<p>1. After the feeder is powered on, press and hold the setting Button for about 3 seconds, the hour digit flashes, press the Up/Down button to set the hour and then press the setting Button to confirm.</p>	
<p>2. The minute digit flashes, press the Up/Down button to set the minute and then press the setting Button to confirm.</p>	
<p>3. The AM icon flashes, press the Up/Down button to choose AM or PM, press the setting Button to confirm, the current time setting is complete.</p>	

8. Setting the Feeding Plan

8.1 Setting the Feeding time

After the current time is set, you can set the feeding time of the first meal.

The meal number 1 and the hour digit flash simultaneously, press the Up/Down button to set the feeding time of the first meal, choose AM or PM and then press the setting button to confirm.

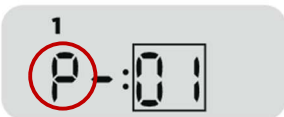


8.2 Setting the Feeding Portion

After the feeding time is set, you can set the feeding portion of the first meal.

The meal number 1 and the portion digit flash simultaneously, press the Up/Down button to set the feeding portion of the first meal, and then press the Setting button to confirm.

The feeding plan of the first meal is set, repeat the above steps to set meal 2-6.



Note:

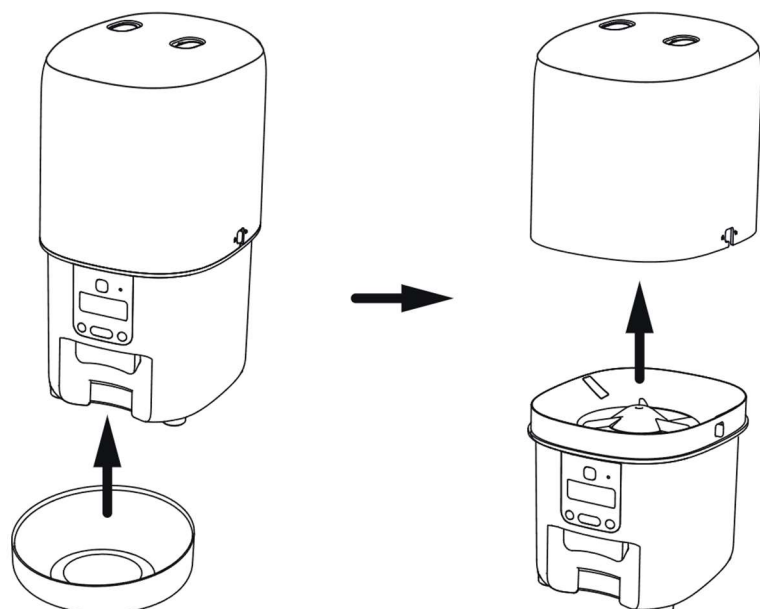
- Up to 6 meals can be set.
- The maximum portion per meal is 16.

8.3 Recommended Feeding Plan

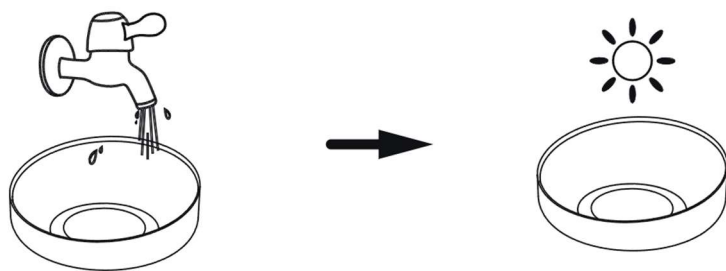
Daily Intake	Meals per Day	Portions per Meal	Per Portion
1/2 cup	2	6	1/24 cup (10.4ml)
	3	4	
	4	3	
1/3 cup	2	4	
	3	3 3 2	
	4	2	
2/3 cup	2	8	
	3	5 5 6	
	4	4	
3/4 cup	2	9	
	3	6	
	4	4 4 5 5	
9/10 cup	2	11	
	3	7 7 8	
	4	5 5 6 6	
1 cup	2	12	
	3	8	
	4	6	
1 1/4 cup	2	15	
	3	10	
	4	7 7 8 8	
1 1/2 cup	2	12	
	3	9	
1 1/3 cup	2	16	
	3	10 11 11	
	4	8	
1 2/3 cup	3	13 13 14	
	4	10	

9. Clean and Care

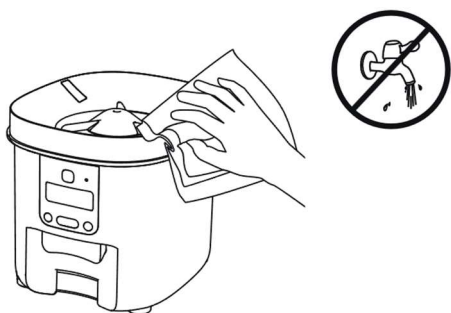
1. Remove the food tank, stainless steel bowl and bottom tray.



2. Rinse the food tank and stainless-steel bowl, detergent can be used, wipe dry or air dry the parts before use.



3. Do not wash the base with water, use a dry or wet cloth to clean.



Note:

- Unplug before cleaning.
- Do not wash or soak the feeder base in water, as the electrical and electronic components.
- To keep food from moisture, air dry or wipe dry all parts before cleaning.
- For the health of pets, rinse it thoroughly if detergent is used for cleaning.
- To keep food fresh, replace the desiccant once a month.

10.Troubleshooting

Problem	Solution
I press the buttons, but they don't work	Press and hold the Unlock Button for 3 seconds to enter the setting mode
I forget the meal settings	In the locked status, press + or - to check the settings of each meal
The food won't come out	<p>1) Please make sure the food in the tank is dry, and food size is within 2-15mm/0.07-0.6 inches in diameter.</p> <p>2) Check if the chute inside is blocked, if blocked, remove the food tank, and then remove the blockage</p> <p>3) Check whether the battery level is low, whether the power adapter is connected, whether power outage occurs when the power adapter is connected and batteries are not installed.</p>
The food amount of each portion is not the same	The first few portions may vary, but it doesn't mean it's faulty. After about 6 feedings, it should be served correctly

11. Safety Instructions

- Dispose of all packaging materials properly. Some items may be packed in plastic bags; these bags could cause suffocation. Keep them away from children and pets.
- Do not use the feeder with pets that are not able to reach the food tray or with any physical disability.
- Do not immerse the base part in water at any time as it may damage electronic components like the control panel.
- Do not use the feeder outdoors. Check its operation frequently to be sure it is dispensing properly.
- Do not use wet, canned or moist food.
- Do not disassemble the feeder other than as instructed in this user manual.
- Only use accessories recommended or sold by the manufacturer. The use of accessories not recommended or sold by the manufacturer may cause an unsafe condition.
- Do not modify the pet feeder.
- Examine the feeder after installation. Do not plug in if there is water on the power cable or plug.
- To avoid tripping, always position the power cable out of the way of foot traffic.
- Do not install or store the pet feeder where it will be exposed to weather or temperatures below 4°C
- Use D alkaline batteries to power the feeder. Do not use rechargeable batteries.
- Check the batteries regularly. Before leaving for an extended period of time, always replace batteries with new ones.
- Do not lift the pet feeder by the lid, food tank, or food bowl. Lift and carry it using both hands and the base, while keeping the feeder in an upright position.
- Suitable for dry food only, with kibble sizes ranging from 2-15mm (0.07in-0.6in) in diameter. Larger kibble may get stuck at the food outlet.
- Do not put your fingers into the food outlet or let your fingers touch the rotor.
- Power off the device when it's not in use.